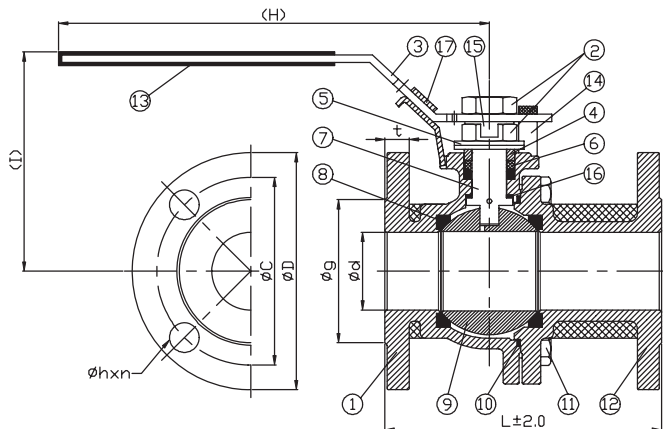


BALL VALVE RK-PROBALL

Type KH 2T F-KFM



1/2" - 4", ANSI 150 lbs. with floating ball, soft seated



RK-Proball KH 2T F ball valves of all sizes are also available with pneumatical, electrical orhydraulic actuators.

Part Name	Material Code VIII	Material Code Xc
Fire-Safe type		
1 body	A216-WCB	A351-CF8M
2 stem nuts	SS 304 (A2-70)	SS 304 (A2-70)
3 lever	SS 304	SS 304
4 gland ring	SS 316	SS 316
5 belleville disc	SS 301	SS 301
6 stem packing	graphite	graphite
7 stem (antistatic)	SS 316	SS 316
8 seat	KFM	KFM
9 ball	A351-CF8M	A351-CF8M
10 body seal	graphite	graphite
11 hex. cap screws	SS 304 (A2-70)	SS 304 (A2-70)
11.1 stud	SS 304 (A2-70)	SS 304 (A2-70)
11.2 nuts	SS 304 (A2-70)	SS 304 (A2-70)
12 cap	A216-WCB	A351-CF8M
13 insulation cover	PVC	PVC
14 stop pin	SS 304	SS 304
15 nut stopper	SS 304	SS 304
16 thrust washer	KFCM	KFCM
17 locking device*	SS 304	SS 304
Standard type		
6 stem packing	KF	KF
10 body seal	KF	KF
16 thrust washer	KF	KF

*Special type

Ordering example:
KH 2T F-Xc-KFM, 1/2", 150 lbs.,
Fire-Safe

Flanged ball valve full bore design acc. to KLINGER material code VIII and Xc face to face dimensions acc. to ANSI B 16.10 flanges acc. to ANSI B 16.5

Specification

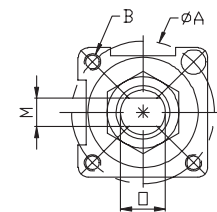
Two-piece ball valve, flanges acc. to ANSI B 16.5, face to face dimensions acc. to ANSI B 16.10, full bore, blow-out-proof stem, body material stainless steel (ASTM A351-CF8M) or carbon steel (ASTM A216-WCB), antistatic device, free of non ferrous metals, seat KFM, stem packing KF/graphite, top flange DIN EN ISO 5211, approved by PED, stuffing box design acc. to GERMAN clean air act, Fire-Safe acc. to API 607 and BS 6755, with lever, safety spring locking device is optional.

Marking: RK-Proball

Types: KH 2T F-VIII-KFM-150 lbs.

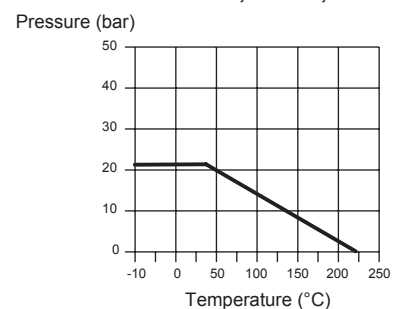
KH 2T F-Xc-KFM-150 lbs.

Top flange



Size	A	B	M	O
1/2	42	M5	8	12
3/4	42	M5	8	12
1	50	M6	10	16
1 1/4	50	M6	10	16
1 1/2	50	M6	10	16
2	70	M8	14	22
2 1/2	70	M8	14	22
3	102	M10	19	27
4	102	M10	19	27

KH 2T F-KFM, 1/2" - 4", 150 lbs.



Dimensions

Size inch	Dimension (mm)										ISO 5211	torque Nm	weight kg
	d	D	C	g	t	h	n	H	I	L			
1/2	15	89	60.3	34.9	11.1	15.9	4	165	86	108	F04	8	1.67
3/4	20	98	69.8	42.9	11.1	15.9	4	165	92	117	F04	10	2.22
1	25	108	79.4	50.8	11.1	15.9	4	176	106	127	F05	12	3.13
1 1/4	32	117	88.9	63.5	12.7	15.9	4	215	114	140	F05	15	4.47
1 1/2	38	127	98.4	73	14.3	15.9	4	215	116	165	F05	25	5.45
2	50	152	120.6	92.1	15.9	19	4	278	136	178	F07	40	10.10
2 1/2	65	178	139.7	104.8	17.5	19	4	278	150	190	F07	70	13.81
3	80	190	152.4	127	19	19	4	375	185	203	F10	90	20.33
4	100	229	190.5	157.2	23.8	19	8	375	200	229	F10	120	30.22

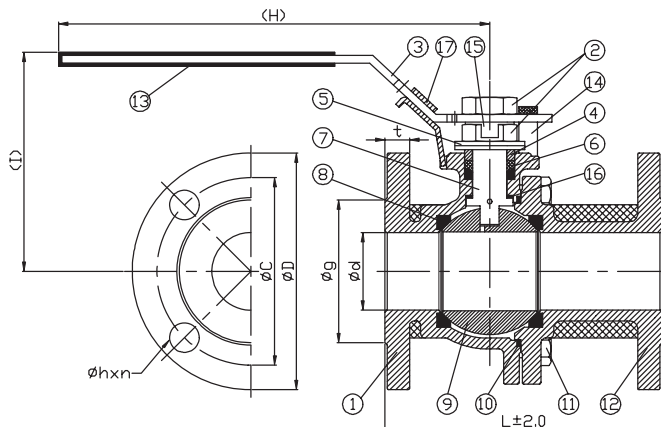
*last updated 10/18

BALL VALVE RK-PROBALL

Type KH 2T F-KFM



1/2" - 4", ANSI 300 lbs. with floating ball, soft seated



RK-Proball KH 2T F ball valves of all sizes are also available with pneumatical, electrical orhydraulic actuators.

Part Name	Material Code VIII	Material Code Xc
Fire-Safe type		
1 body	A216-WCB	A351-CF8M
2 stem nuts	SS 304 (A2-70)	SS 304 (A2-70)
3 lever	SS 304	SS 304
4 gland ring	SS 316	SS 316
5 belleville disc	SS 301	SS 301
6 stem packing	graphite	graphite
7 stem (antistatic)	SS 316	SS 316
8 seat	KFM	KFM
9 ball	A351-CF8M	A351-CF8M
10 body seal	graphite	graphite
11 hex. cap screws	SS 304 (A2-70)	SS 304 (A2-70)
11.1 stud	SS 304 (A2-70)	SS 304 (A2-70)
11.2 nuts	SS 304 (A2-70)	SS 304 (A2-70)
12 cap	A216-WCB	A351-CF8M
13 insulation cover	PVC	PVC
14 stop pin	SS 304	SS 304
15 nut stopper	SS 304	SS 304
16 thrust washer	KFCM	KFCM
17 locking device*	SS 304	SS 304
Standard type		
6 stem packing	KF	KF
10 body seal	KF	KF
16 thrust washer	KF	KF

*Special type

Ordering example:
KH 2T F-Xc-KFM, 1/2", 300 lbs.,
Fire-Safe

Flanged ball valve full bore design acc. to KLINGER material code VIII and Xc face to face dimensions acc. to ANSI B 16.10 flanges acc. to ANSI B 16.5

Specification

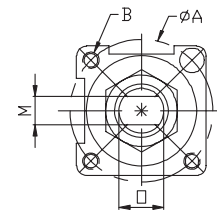
Two-piece ball valve, flanges acc. to ANSI B 16.5, face to face dimensions acc. to ANSI B 16.10, full bore, blow-out-proof stem, body material stainless steel (ASTM A351-CF8M) or carbon steel (ASTM A216-WCB), antistatic device, free of non ferrous metals, seat KFM, stem packing KF/graphite, top flange DIN EN ISO 5211, approved by PED, stuffing box design acc. to GERMAN clean air act, Fire-Safe acc. to API 607 and BS 6755, with lever, safety spring locking device is optional.

Marking: RK-Proball

Types: KH 2T F-VIII-KFM-300 lbs.

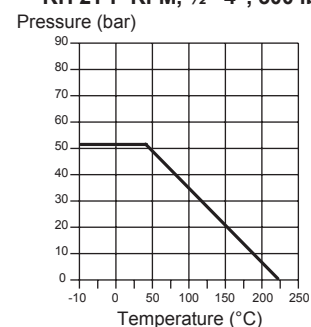
KH 2T F-Xc-KFM-300 lbs.

Top flange



Size	A	B	M	O
1/2	42	M5	8	12
3/4	42	M5	8	12
1	50	M6	10	16
1 1/4	50	M6	10	16
1 1/2	50	M6	10	16
2	70	M8	14	22
2 1/2	70	M8	14	22
3	102	M10	19	27
4	102	M10	19	27

KH 2T F-KFM, 1/2"-4", 300 lbs.



Size inch	Dimension (mm)										ISO 5211	torque Nm	weight kg
	d	D	C	g	t	h	n	H	I	L			
1/2	15	95	66.7	34.9	14.3	15.9	4	163	86	140	F04	8	2.19
3/4	20	117	82.6	42.9	15.9	19	4	163	92	152	F04	10	3.30
1	25	124	88.9	50.8	17.5	19	4	174	106	165	F05	12	4.62
1 1/4	32	133	98.4	63.5	19	19	4	214	114	178	F05	15	6.22
1 1/2	38	156	114.5	73	20.6	22.2	4	214	116	190	F05	25	8.24
2	50	165	127	92.1	22.2	19	8	280	136	216	F07	40	12.31
2 1/2	65	190	149.2	104.8	25.4	22.2	8	280	150	241	F07	70	17.55
3	80	210	168.3	127	28.6	22.2	8	370	185	283	F10	90	27.52
4	100	254	200	157.2	31.8	22.2	8	370	200	305	F10	120	41.23

*last updated 10/18